



Comefri SpA Italia

Keskipakopuhaltimet Ilmanvaihtojärjestelmiin

- **Magnano in Riviera**

Via Buia, 3 - 33010 Magnano in Riviera (UD)

Tel. +39 432 798811

Fax +39 432 783378

info@comefri.com



Teollisuuspuhaltimet

- **Artegna**



Sertifikaatit

Certificate of Registration

Quality Management System

Certificate No: **FM 01403**

Location	Registered Activities
Comefri SpA Via Buja 3 33010 - Magnano in Riviera Udine Italy	The design and equipment. Centrifugal fans
Comefri SpA Via Buja 2 33011 - Artegna (UD) Udine Italy	The design and equipment. Centrifugal fans Includes labor functions.

Originally registered: **1 Dec 1987** Latest issue: **24 Sep 2001**

This license remains the property of BSI and shall be returned immediately upon request.
This certificate does not expire.
To check its validity telephone: +44 (0)20 8996 9001 or visit www.bsi-global.com/BusinessPartners

The British Standards Institution is incorporated by Royal Charter
Group Headquarters: 389 Chiswick High Road, London W4 4AL, UK.

Certificate of Registration

Quality Management System



This is to certify that:

Comefri SpA
Via Buja 3
33010 Magnano in Riviera
Udine
Italy

Hold Certificate No: **FM 01403**
and operate a Quality Management System which complies with the requirements of **BS EN ISO 9001:1994** for the following scope:

The design and manufacture of air moving equipment.
Centrifugal fans - 2kw to 140kw shaft power.
Includes (at the Artegna location) the laboratory and additional assembly functions.

For and on behalf of BSI:



Certification Manager, System Assessment

Originally registered: **1 Dec 1987** Latest issue: **24 Sep 2001** Page: 1 of 2




This license remains the property of BSI and shall be returned immediately upon request.
This certificate does not expire.
To check its validity telephone: +44 (0)20 8996 9001 or visit www.bsi-global.com/BusinessPartners
The British Standards Institution is incorporated by Royal Charter
Group Headquarters: 389 Chiswick High Road, London W4 4AL, UK.





ACCREDITED LABORATORY

The laboratory of
COME FRI S.p.A.
at
**33011 Artegna
(Udine) Italy Via Buia 2**

is accredited with AMCA International as being qualified to conduct tests in accordance with

**INSTALLATION TYPE B
AMCA STANDARD - Figure 14
BS 848: PART 1: Figure 26A
DIN 24 - 163 Figure 3**



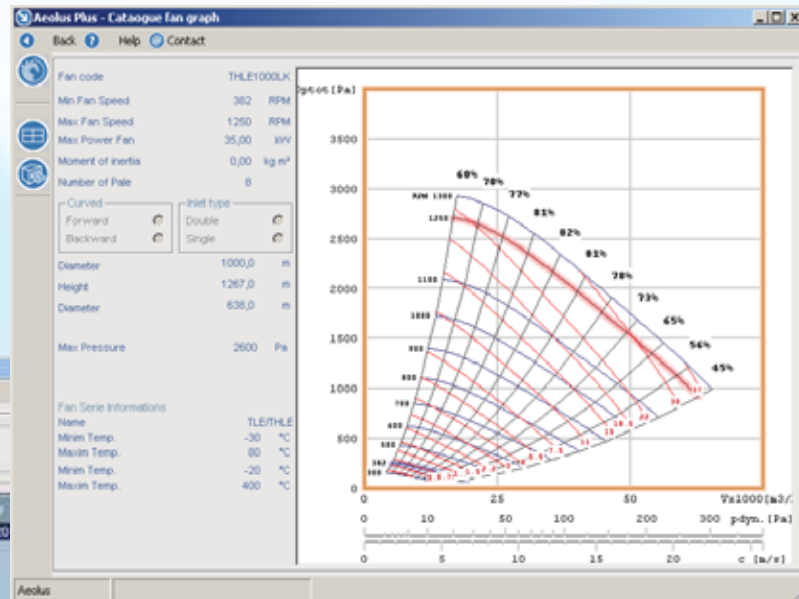
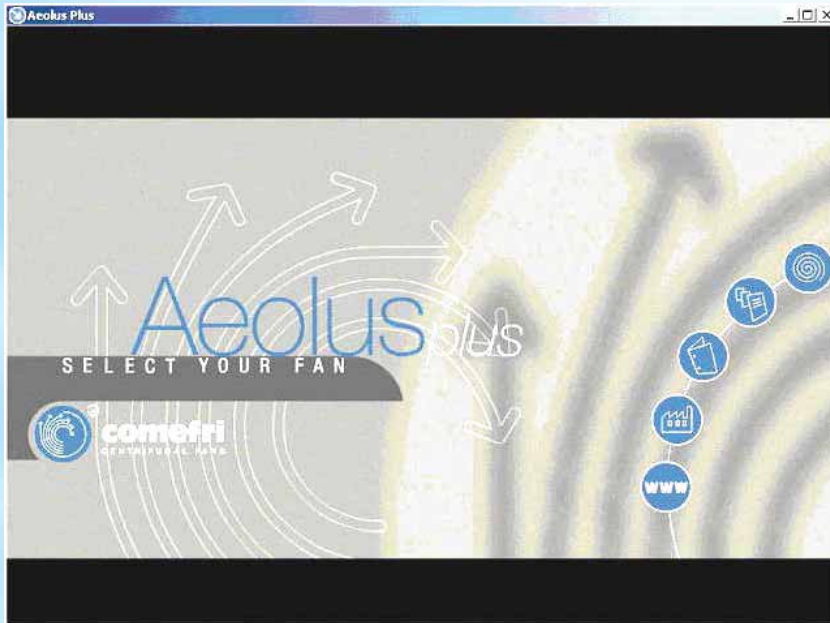

APPROX. 30, 2005

Accreditation Expires



Movement and Control Association International, Inc.
10 West University Drive, Arlington Heights, Illinois 60004 USA

Puhaltimien valintaohjelma: Aeolus Plus



Your file	Our file	Description	Fan	Volume m ³ /s	Pressure Pa	T of static	Outlet	T °C	Flow	Den.Fac.	ρ
			HLZ 560 T	12000	1500	Total	Free	20,00	0	Auto	1,20

Model	Order code	Manufacturer	Motor type	Motor code/Code	Motor power	Speed	Max Power SW
	AD401100100	ABB	ABT	T80 T80C		1450	

Type	Support type	Min. Safety Factor
Direct	Mounting	1,15

Transmission Data	Transmission results												
Address base: GA Motor lot: SH Connection: L0270 Pin: 311 Electrical: SPA Reduction: 20000	<table border="1"> <tr> <td>Fan RPM</td> <td>324</td> <td>405</td> </tr> <tr> <td>Power</td> <td>kw</td> <td>0,067</td> </tr> <tr> <td>Volume</td> <td>m³/h</td> <td>2782,41</td> </tr> <tr> <td>Pressure</td> <td>Pa</td> <td>81,548</td> </tr> </table>	Fan RPM	324	405	Power	kw	0,067	Volume	m ³ /h	2782,41	Pressure	Pa	81,548
Fan RPM	324	405											
Power	kw	0,067											
Volume	m ³ /h	2782,41											
Pressure	Pa	81,548											

Fan	Pstat	Pw kW	Pw SW	ρ dyn Pa	ρ stat Pa	ρ max Pa	ρ min Pa	ρ 10% Pa	ρ 10% Pa	η max	η 10%	η 1%	
TL10 - 10 T	500	5,20	7,50	506	2524,0	5,50	1014,0	800	274	23,7	29,0	43	16
TL12 - 12 T	5935	5,79	5,56	255	2116,0	6,35	1322,0	800	545	22,5	26,5	59	40
TL12 - 8 T	6962	4,05	5,50	617	2116,0	6,80	1289,0	800	383	21,8	26,4	66	28
TL15 - 11 basic	6957	3,22	4,00	204	1600,0	3,73	1016,0	800	586	21,3	18,4	69	51
TL15 - 11 R	6968	3,22	4,00	204	1600,0	3,73	1016,0	800	586	21,3	18,4	69	51
TL15 - 11 T	6989	3,22	4,00	204	1720,0	4,52	1016,0	800	586	21,3	18,4	69	51
TL15 - 15 basic	6014	3,68	4,00	126	1600,0	4,50	1070,0	800	672	22,4	14,8	72	51
TL15 - 15 R	6016	3,68	4,00	126	1600,0	4,50	1070,0	800	672	22,4	14,8	72	51
TL15 - 15 T	6016	3,68	4,00	126	1719,0	10,26	1070,0	800	672	22,4	14,8	72	51
TL15 - 13 basic	6041	3,94	4,00	110	1210,0	4,56	927,0	800	690	21,9	13,5	75	65
TL15 - 13 R	6042	3,94	4,00	110	1210,0	4,56	927,0	800	690	21,9	13,5	75	65
TL15 - 13 T	6043	3,94	4,00	110	1515,0	10,32	927,0	800	690	21,9	13,5	75	65
TL15 - 18 basic	6068	2,10	4,00	65	1210,0	6,34	964,0	800	725	20,2	10,4	72	65

*Tutkimus & kehitystyö:
Laboratorio*

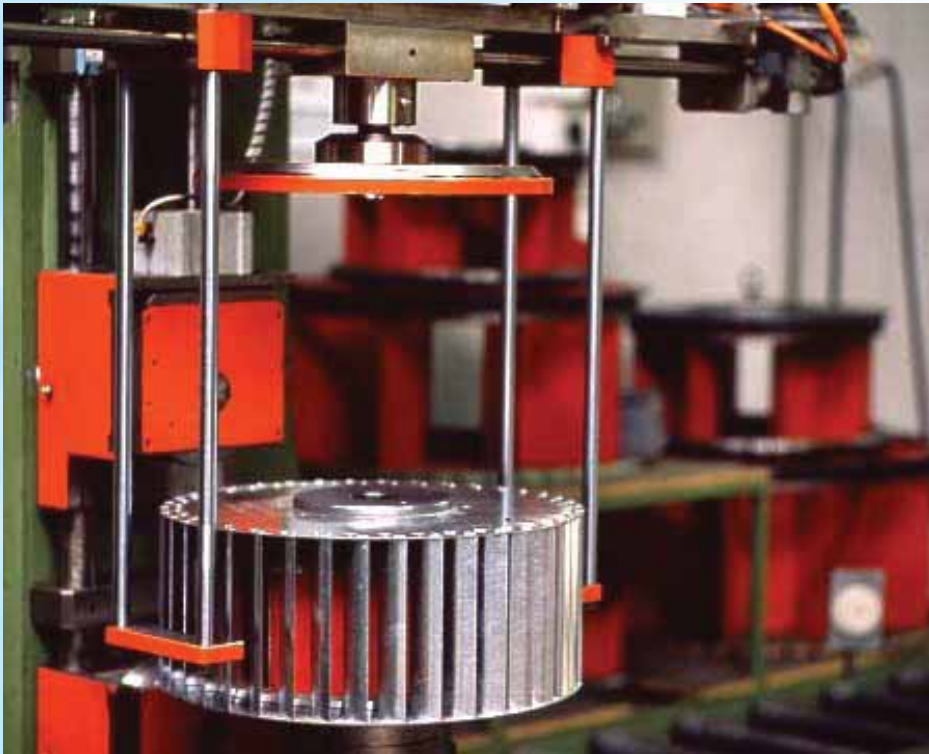


Valmistus



***Tuotevali-
koimamme***

*Puhaltimet eteenpäinkaartuvien
siivin*



Taaksepäin kaartuvin siivin



Airfoil-siivin



HVAC keskipakopuhaltimet



*HVAC keskipakopuhaltimet:
DIDW/SISW taaksepäin kaartuvin
siivin*



Double inlet:
THLZ FF

DIDW= Double inlet
Double Width
= Kaksi-imuaukkoi-
nen puhallin
SISW= Single Inlet
Single Width
= Yksi-imuaukkoi-
nen puhallin

*Koot: 180mm - 1250mm
Ilmavirta: ... 56 m³/s
Paine: ... 3.700 Pa*



Single inlet:
THLE

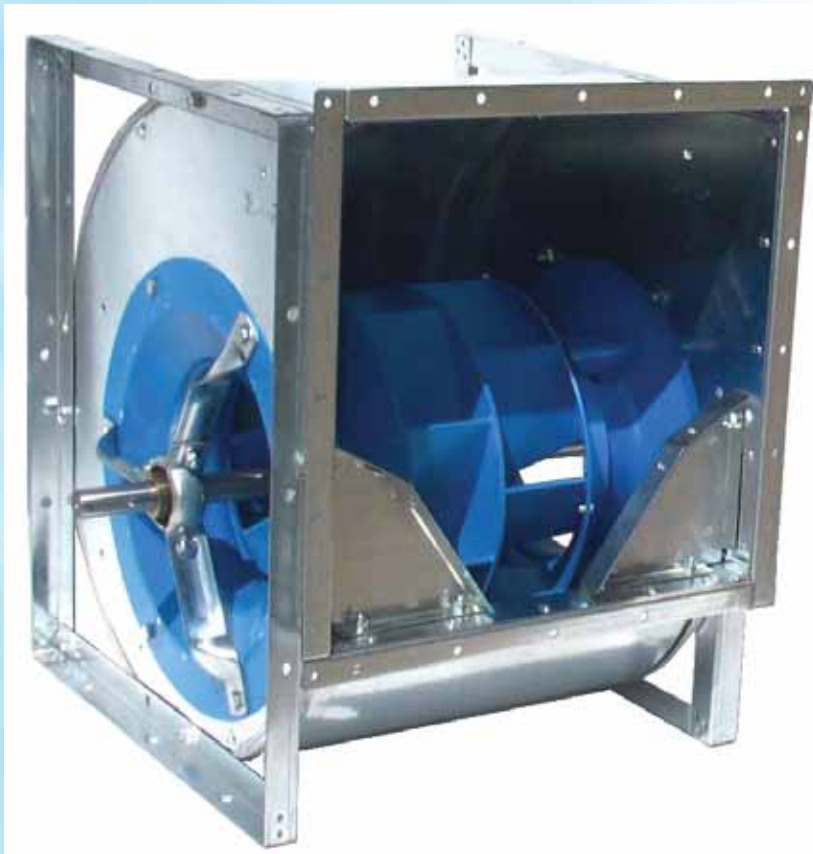


Double inlet:
VTZ



Double inlet:
NTHZ FF

HVAC keskipakopuhaltimet: airfoil siivet



Kaksi-imuaukkoinen:
TZAF FF
ATZAF FF (imperial)


Koot: 315mm - 1250mm

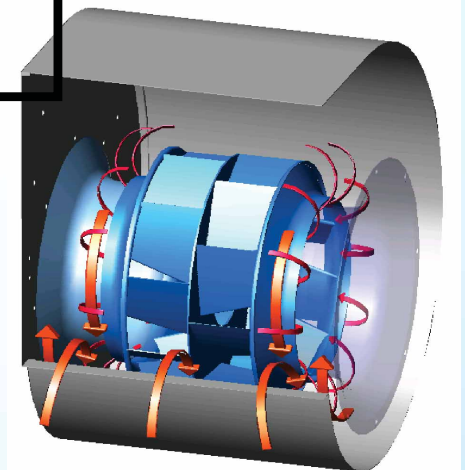
(imperial 12 – 49")

Ilmavirta: ... 56 m³/s

Paine: ... 4.000 Pa

Forefinger® laite:


..... **NTHZ FF ja**
THLZ FF



- **Parempi hyötysuhde**
- **Alempi äänitaso**
- **Alempi kierrosluku**

Imperial = tuumakoon valmistettu puhallinsaja

Kammio puhallinsarja

**YKSI PUHALLINALUSTA
3 SIIPIPYÖRÄÄ**



- pieni tilantarve (mahtuu pienempään koteloon)
- lisää joustavuutta kojesuunnitteluun
- helpompi huolto ja puhdistettavuus
- parempi äänitason hallinta



NPL
taaksepäin kaartuvat siivet

Koot: 250mm - 1400mm
Ilmavirta: ... 38 m³/s
Paine: ... 2.800 Pa



NPA (uusi!) airfoil
siivet

Koot: 315mm - 1600mm
Ilmavirta: ... 42 m³/s
Paine: ... 2750 Pa

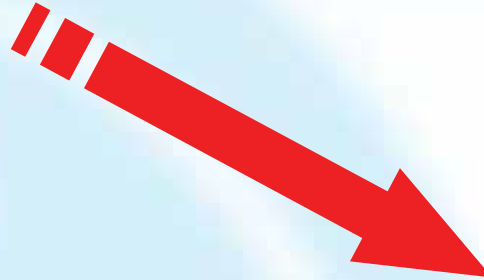


TE
taaksepäin kaartuvat siivet,
polyamidisiipipyörä

Koot: 180mm - 450mm
Ilmavirta: ... 3,3 m³/s
Paine: ... 1.700 Pa



Ilmankäsittelykojeet



*Huoltovapaat
puhaltimet*



Puhdashuoneet

Teollisuus- Puhaltimet



*Yhdeltä puolelta imevät
teollisuuspuhaltimet
(SISW)*



Yksi-imuakkoinen
taaksepäin kaartuvat siivet:
BCE 25/17/15

Koot: 400mm - 1600mm

Ilmavirta: ... 44 m³/s

Paine: ... 7.000 Pa



Yksi-imuaukkoinen
airfoil siivet:
BAFE

Kahdelta puolelta imevät teollisuuspuhaltimet (DIDW)

Koot: 400mm - 1800mm

Ilmavirta: ... 140 m³/s

Paine: ... 4.000 Pa

Kaksi-imuaukkoinen
airfoil siivet:
MAZ / BZAF



Kaksi-imuaukkoinen
taaksepäin kaartuvat siivet:
MHZ



**Kiitos siitä että COMEFRI
sai mahdollisuuden esittäytyä
yrityksenä ja että saimme esitellä Teille
tuotteitamme.**